



[Send To Printer](#) [Back to Map](#)

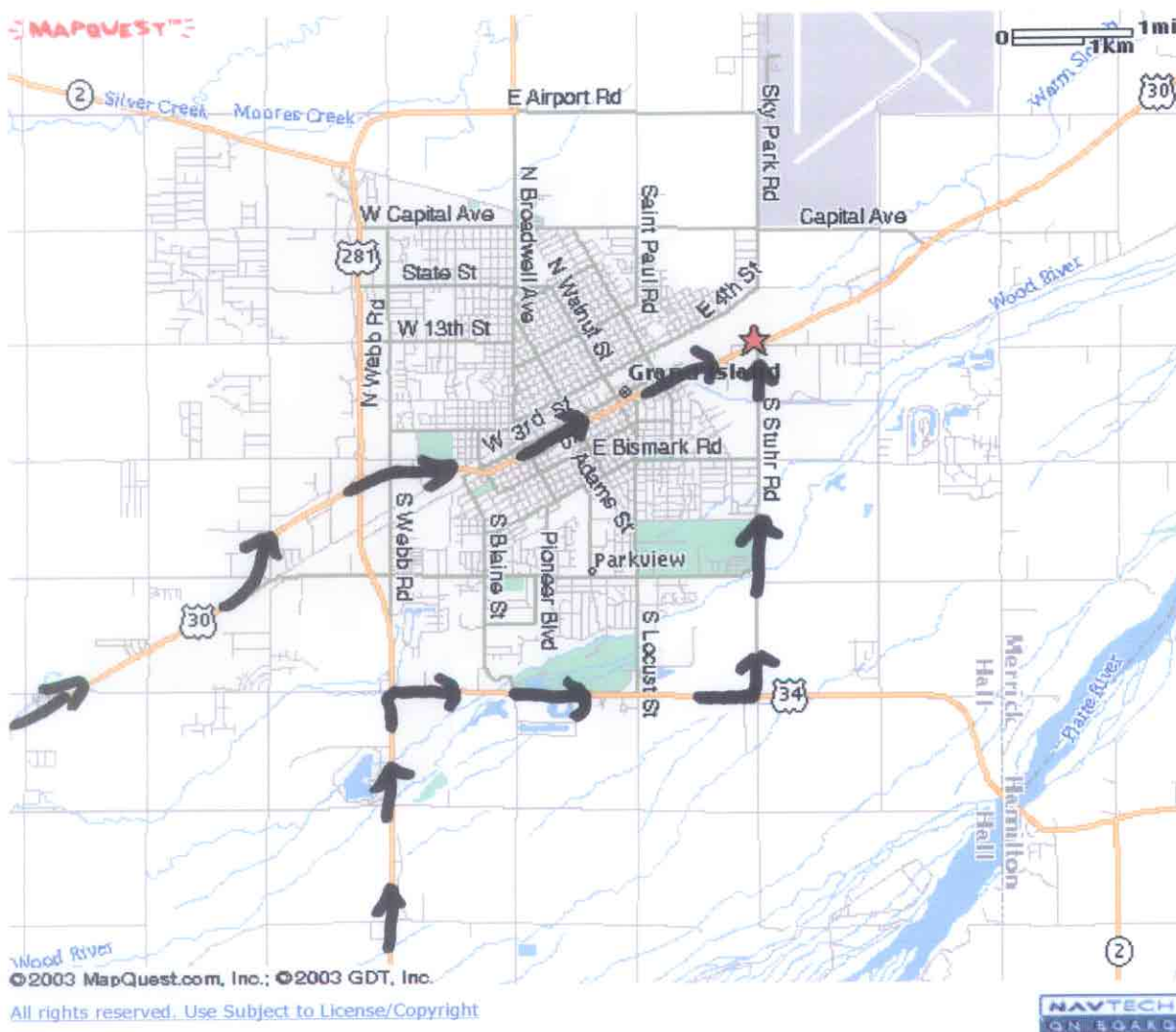
Grand Island NE  
68803 US

**Book a Hotel:**

Save up to 70% on  
Orbitz Savers Nationwide!

[Book Now!](#)

*Notes: The star is the  
location of Pump & Pantry #15  
This is where we will meet*



This map is informational only. No representation is made or warranty given as to its content. User assumes all risk of use. MapQuest and its suppliers assume no responsibility for any loss or delay resulting from such use.

[Privacy Policy](#) & [Legal Notices](#) © 2003 MapQuest.com, Inc. All rights reserved.



[Send To Printer](#) [Back to Map](#)

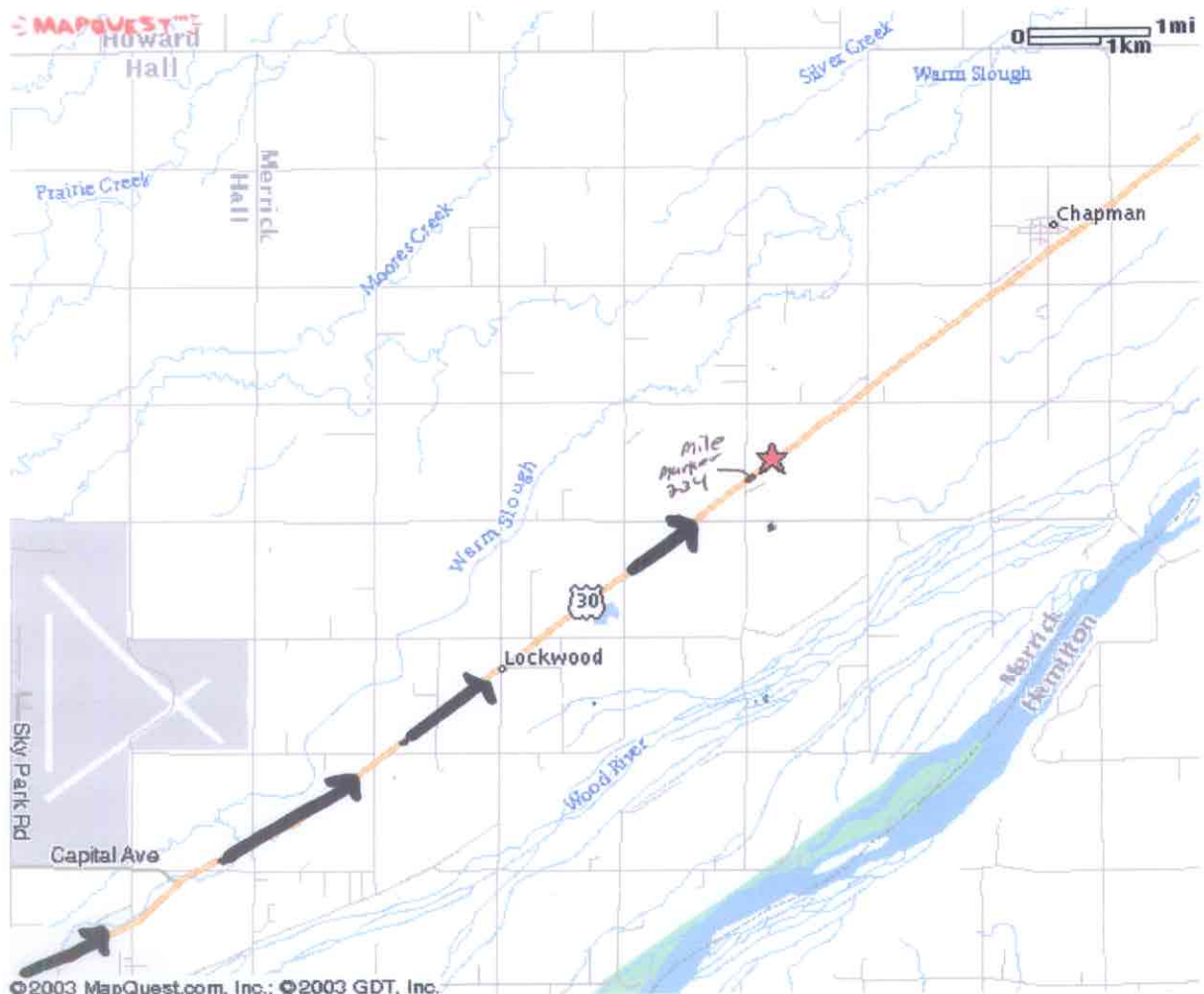
Grand Island NE  
68803 US

*Notes: The star is where the  
turn off of Hwy 30 is.*

**Book a Hotel:**

Save up to 70% on  
Orbitz Savers Nationwide!

[Book Now!](#)



© 2003 MapQuest.com, Inc.; © 2003 GDT, Inc.  
All rights reserved. Use Subject to License/Copyright



This map is informational only. No representation is made or warranty given as to its content. User assumes all risk of use.  
MapQuest and its suppliers assume no responsibility for any loss or delay resulting from such use.

[Privacy Policy](#) & [Legal Notices](#) © 2003 MapQuest.com, Inc. All rights reserved.



[Send To Printer](#) [Back to Map](#)

Grand Island NE  
68803 US

**Notes:** *This is an old photo but  
the lines show where to go.*

**Book a Hotel:**

Save up to 70% on  
Orbitz Savers Nationwide!

[Book Now!](#)



© 2003 GlobeXplorer, USGS

All rights reserved. Use Subject to License/Copyright



[Privacy Policy & Legal Notices](#) © 2003 MapQuest.com, Inc. All rights reserved.